

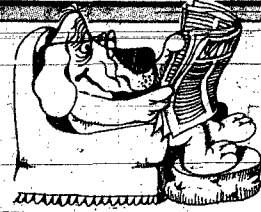
Monday

FEBRUARY 16, 1987
WAYNE, NEBRASKA 68787
ONE-HUNDRED NINTH YEAR
NUMBER THIRTY-EIGHT

25¢ THIS ISSUE
ONE SECTION, 12 PAGES

Extended Weather Forecast:
Monday, Tuesday, Wednesday,
partly cloudy; little if any
precipitation; highs in the mid 30s
to 40s; low in the upper teens to
20s.

Trisha Krie, 8
Laurel-Concord Public School



Check out some dog-gone good
bargains in this Monday's
edition. It's Dog Days in the
middle of winter!

See page 12.

THE WAYNE HERALD



Photography: Chuck Hackenmiller

The one-two punch

YOUNG WAYNE Tai-Kwon-Do student Jeremy Foote splits a board held by his dad and instructor Brian Foote, during a demonstration at the Wayne Care Centre 'Stag Night' that took place Wednesday evening.

At Wayne State College

Orchestra performing Wednesday

Tickets to the Wayne State College performance of the Franz Liszt Chamber Orchestra from Budapest, Hungary, will remain on sale through Wednesday or until they are sold out, according to James Day, coordinator of the Black & Gold Series.

The Franz Liszt Orchestra will appear in Ramsey Theatre at 8 p.m. Wednesday, Feb. 18. It is the third of five Black & Gold Series performances at the college during the academic year.

Flutist Alain Marion, a renowned

soloist and music teacher in Europe, will be a highlight featured in the orchestra.

The orchestra has toured throughout the world. Included on this trip through the United States will be performances at Carnegie Hall in New York City.

According to a review in The New York Times, the Franz Liszt Orchestra "plays with enthusiasm and so freely that they were both entertaining and richly expressive."

Tickets to the performance are available at \$4 for adults and \$2 for those high school age and younger. They are on sale at the Hahn Administration Building Business Office from 8 a.m. to 5 p.m. If any tickets remain, they will be sold at the door.

Wayne State students, faculty and staff are admitted free by obtaining tickets in advance at the Black & Gold Series ticket window at the Business Office.



THE FRANZ LISZT CHAMBER Orchestra will be performing, as part of Wayne State's Black and Gold Series, at Ramsey Theatre Wednesday night. Tickets remain for sale at the Hahn Administration Building, or at the door if any tickets remain.

Radioactive waste disposal issue remains controversial

By Chuck Hackenmiller
Managing Editor

A Department of Environmental Control official said the maps which have been displayed across the front pages of newspapers in northeast Nebraska, showing the locations of areas "not excluded" as future low level radiation dump sites, are "relatively accurate."

However, people are reading into the maps with the impression that the dump will automatically be placed there, according to James Neal, Department of Environmental Control public information director. Part of the problem with the growing concern and fear about the dump site is that some people "do not know what the maps really mean."

Nebraska counties included in the report that have "not been excluded" as possible sites include Wayne and Dixon Counties. Maps showing the non-excluded sites are from the draft of a New York consulting firm — part of the second phase of study being done by the Central Interstate Low-Level Radioactive Waste Compact. Members of the Compact include Nebraska, Kansas, Oklahoma, Louisiana and Arkansas.

Non-excluded potential radioactive waste dump sites listed in Wayne County include areas in townships of Brenna (sections 7,9,10,11,12,14,17); Plum Creek (sections 2,3,4,5,11,12); Leslie (sections 6,18); Sherman (sections 2,3,4,5,6,11,12,13) and Wilber (17,19,20).

IT WAS INDICATED by Neal that nobody had walked on and surveyed the property. He said that nobody has "physically" looked at the area. The studies had taken into consideration reports on water tables, flood plain, population of the area, wildlife and geological conditions.

Public hearings had been conducted by the Department of Environmental Control, concerning rules and regulations of the dump site, in recent weeks. One of those meetings took place recently in Norfolk.

Another meeting is scheduled for Feb. 17 at Grand Island, beginning at 7 p.m. at the Barr Junior High facility.

The official second phase study is expected to be released on Feb. 15. Public hearings dates for March, on the complete second phase study, is expected to be announced at a later date.

A contract with the developer of the radioactive waste dump facility, who selects the area from within the state where the radioactive dump site will be located, must be signed sometime in 1988. The facility must be in operation and accepting radioactive waste by 1993.

The developer, he said, has to meet the necessary criteria that indicates the property is suitable for a waste site when asking for a license at the state level, which comes from the en-

An informational meeting to be conducted by the Western Nebraska Resources Council relating to the management of low-level radioactive waste in Wayne will take place Tuesday, Feb. 17 at 7 p.m. in the National Guard Armory building.

Sam Welsh, chairman of the resources council based in Chadron, will speak on several issues concerning the low-level radioactive waste dump site topic.

Shirley Hoelling of Pender, who announced the meeting to the area media, said alternatives will be discussed on the waste dump proposal. Among the proposals she mentioned was to have the disposal become the responsibility of the generating plants producing the radioactive waste.

An above ground, rather than the shallow burial theory, could also be considered as an alternative, she mentioned. She also anticipates there will be discussion on the current legislative bills introduced by State Senator Sandra Scofield of Chadron.

vironmental control office.

BEFORE A license is distributed, a detailed report of construction, operation and maintenance is required.

Reports indicate that the disposal site will consist of approximately 160 acres — about 20 to 30 acres to be used for actual burial of the low-level radioactive waste.

The developer of the radioactive waste dump site will choose from hundreds of square miles which are considered as suitable sites among the Compact states. There are no "non-excluded" sites listed in Oklahoma.

There are approximately 860 square miles of "non-excluded" sites in Kansas. Nebraska has about 300 square miles and 37 potential sites, while Arkansas and Louisiana have

less than 20 square miles.

Of all the five states in the Compact, Neal said Nebraska generates the most radioactive waste. The state's two nuclear generating plants yield about 90 percent of the radioactive waste.

Neal said the radioactive waste to be buried will "not be high level radioactive waste such as fuel rods." But it will have wastes such as clothing or tools contaminated by radiation and hospital radioactive materials.

"It's the kind of material that goes up and down our highways every day," Neal mentioned.

RECENTLY, the Western Nebraska Resources Council, an organization that is seeking

See WASTES, page 2

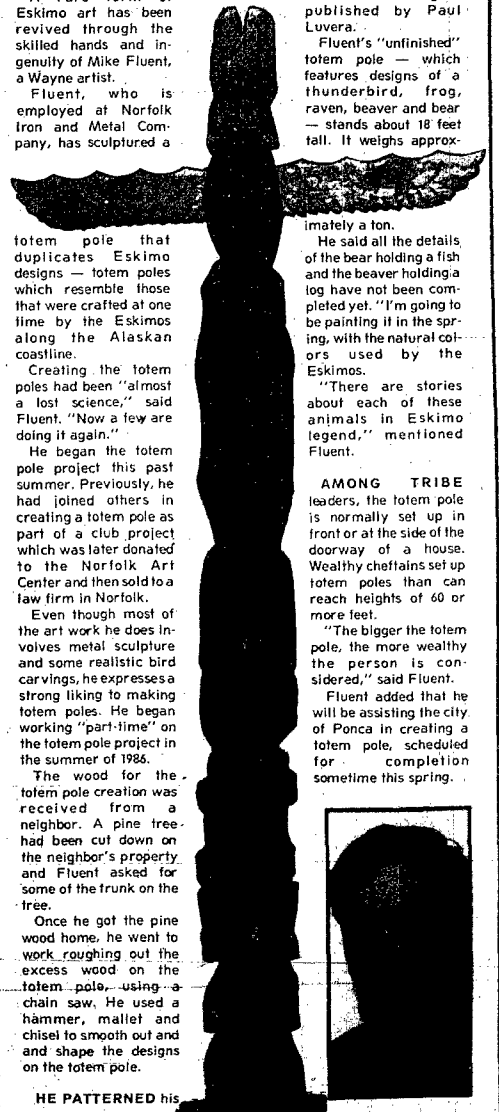
Makes totem pole

Eskimo art form comes to Wayne

By Chuck Hackenmiller
Managing Editor

A rare form of Eskimo art has been revived through the skilled hands and ingenuity of Mike Fluent, a Wayne artist.

Fluent, who is employed at Norfolk Iron and Metal Company, has sculptured a



totem pole that duplicates Eskimo designs — totem poles which resemble those that were crafted at one time by the Eskimos along the Alaskan coastline.

Creating the totem poles had been "almost a lost science," said Fluent. "Now a few are doing it again."

He began the totem pole project this past summer. Previously, he had joined others in creating a totem pole as part of a club project which was later donated to the Norfolk Art Center and then sold to a law firm in Norfolk.

Even though most of the art work he does involves metal sculpture and some realistic bird carvings, he expresses a strong liking to making totem poles. He began working "part-time" on the totem pole project in the summer of 1985.

The wood for the totem pole creation was received from a neighbor. A pine tree had been cut down on the neighbor's property and Fluent asked for some of the trunk on the tree.

Once he got the pine wood home, he went to work roughing out the excess wood on the totem pole, using a chain saw. He used a hammer, mallet and chisel to smooth out and shape the designs on the totem pole.

HE PATTERNED his

designs from a book he read on the poles, featuring original Eskimo designs, published by Paul Luvera.

Fluent's "unfinished" totem pole — which features designs of a thunderbird, frog, raven, beaver and bear — stands about 18 feet tall. It weighs approximately a ton.

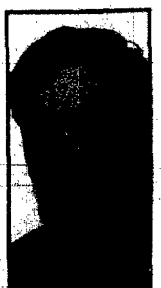
He said all the details of the bear holding a fish and the beaver holding a log have not been completed yet. "I'm going to be painting it in the spring, with the natural colors used by the Eskimos."

"There are stories about each of these animals in Eskimo legend," mentioned Fluent.

AMONG TRIBE leaders, the totem pole is normally set up in front of or at the side of the doorway of a house. Wealthy chiefs set up totem poles that can reach heights of 60 or more feet.

"The bigger the totem pole, the more wealthy the person is considered," said Fluent.

Fluent added that he will be assisting the city of Ponca in creating a totem pole, scheduled for completion sometime this spring.



MIKE FLUENT and his totem pole.

6-sports

The Wayne Herald, Monday, February 16, 1987

Lady Vikings avoid upset by Laurel

For the second time in less than a week the Laurel Lady Bears were beaten by Class C-2's second-rated team.

Thursday night Wausa edged the Lady Bears 41-36 in a game played at Laurel-Concord High School before a spirited Parents' Night crowd.

The Lady Vikings won a seven-point decision over Laurel last Friday in the semifinals of the Lewis and Clark Conference Tournament.

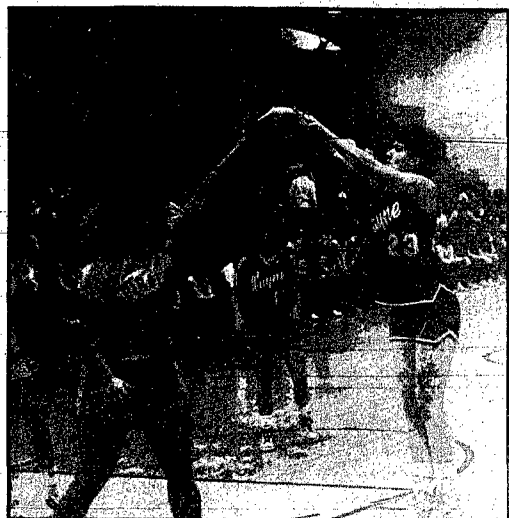
They just have that knack of hitting late free throws," Thies said. A crucial point in the game came with about one minute to play. Wausa led 40-36 but the Lady Vikings wanted Gail Twiford of Laurel. Twiford had a chance to cut the lead to two points but the senior missed the first of a

one and one opportunity. Thies said if her team could have cut the lead to two points the outcome may have been different. The coach added she was pleased with her team's play. The Lady Bears were more prepared than they were in the first meeting.

department. Twiford pulled down 11 boards and Amy Adkins added seven rebounds. Wausa, 17-2 was led by Tiffany Anderson and Sandi Finck. The pair scored 10 points apiece. Laurel, 10-6, will play Pierce in the opening round of the Class C1-10 Subdistrict Wednesday at 8 p.m. at Norfolk.

Laurel 4 12 8 12-36
Wausa 2 13 10 16-41

Laurel	FG	FT	F	TP
Twiford	6	6-9	1	18
Dempster	5	0-0	3	10
Christensen	1	0-0	2	2
A. Adkins	2	0-0	5	4
S. Adkins	1	0-0	5	2
Totals	15	6-11	19	36
Wausa	17	5-19	12	41



LADY BLUE DEVIL—Robin Luft puts up a shot over Mary Henderson of Emerson-Hubbard in Wayne's 44-42 win over the Lady Pirates.

Wayne girls edge E-H on the road 44-42

The Wayne Lady Blue Devils got more than they bargained for when they traveled to Emerson Thursday night to take on the Emerson-Hubbard Lady Pirates.

Corbit visited the University of Nebraska-Lincoln's athletic physician Dr. Pat Clare who fitted Corbit with a soft splint. The splint enables her to catch the ball better. Uning said Corbit is still in pain when she passes the ball. But she hopes four or five days off will help the finger heal.

Allen started out slow and trailed 17-14 at halftime. It was the exact opposite when the Lady Eagles hosted Beemer in the opening round of the conference tournament. Allen posted a large lead in the early going and had to hold on down the stretch. This time Allen outscored the Lady Bobcats 28-17 in the second half.

Chase Harder 1 0-1 2 2
Noe 1 0-0 0 2
L. Hansen 1 0-0 0 2
Totals 16 10-19 9 42
Beemer 10 7 7 10-34

Allen	FG	FT	F	TP
Erwin	7	5-7	1	19
B. Hansen	4	4-9	3	12

"We didn't get up for them," she said. "We didn't move our feet on defense and we were tentative on offense."

Uning said she thinks her team will get the fourth seed in the tough Class B 4 district to be played at Norfolk Community College. She said top-ranked Columbus Scotus will be the district's top team followed by No. 2 Hartington Cedar Catholic and No. 6 West Point. Tenth-rated Blair and Wayne will battle for the fourth and fifth seed. Other teams include Columbus Lakeview, North Bend and Schuyler.

The Winside Wildcats again played well for three quarters before losing to Osmond in the fourth period 65-56. Winside Coach Mark Freburg said his team gave a tremendous effort. Winside, 2-13, was tied with the Tigers after the first period 10-10. Osmond took a 24-19 lead at halftime.

The Winside mentor was happy with the Wildcats' scoring balance. Four of the five starters finished in double figures. Tim Jacobsen, Kevin Jaeger and Chris Nau all contributed 14 points while Mike Thies added 12 markers. Jaeger and Thies pulled down eight and seven rebounds respectively as the Wildcats were outboarded 35-30.

Wayne outboarded the Lady Pirates 31-21. Kecia Corbit grabbed 12 boards and Shelly Pick gathered eight caroms.

The Wayne JV's, 11-3, blasted Emerson-Hubbard 33-12. Tonya Erxleben led the JV's with 13 points. Kristy Hansen had a team-high seven rebounds.

Osmond made only one more field goal than Winside but they converted seven more free throws. Freburg said his team could have extended its lead in the second half but they couldn't convert on several layups after steals on the defensive end.

Winside will finish the regular season Friday when they travel to Newcastle to play the Raiders.

ANTIQUES & COLLECTIBLES AUCTION
Sunday, February 22, 1987 at 11 a.m.
West Point, Nebraska, City Auditorium

DRESDEN wash set, Popsy Pattern, inlaid pitcher, basin, toothbrush holder, covered powder jar — ROYAL BAYREUTH Rose Topaz 5 1/2 inch pinched spout pitcher — Stigal type Pitcher and 6 tumbler — Silver Pickle Castor with tongs, Cranberry glass insert container — "Potato Bug" Mandolin with case, Pat. 1879 — Ukelin with case, 1926 — Crocks — Primitives — Flow Blue — Cut and Pressed glass — Furniture — Depression Glass — Graniteware — Children's Toys — "Etsy" Vermont Cherrywood Organ — China Dolls — "Sanic" Blue and Black cookstove (excellent condition), Cookie Jars and many more items.

MARIE POSPISHIL (402) 372-3621
Sale conducted by Smith, Robertson and Nelson, Real Estate and Auction Service, Jim Ortmeier, Associate Broker and Auctioneer — 372-3461

PREVENTIVE HEALTH CARE FOR THE LIFE OF YOUR DOG

Along with regular exercise and checkups, eating the right foods is an important part of a preventive health care program. That's why there are different Science Diet® pet foods for your dog's different stages of life.

- CANINE GROWTH:** For puppies from weaning to maturity.
- CANINE MAINTENANCE:** For adult dogs from maturity to old age.
- CANINE PERFORMANCE:** For active adult dogs needing increased energy for physical performance and special conditioning.
- CANINE SENIOR:** For older dogs in which the aging process is evident.

Available in both dry and canned forms. Come by and let us show you why Science Diet is the best food you can feed your dog.

WAYNE VETERINARY CLINIC
East Hwy. 35 — Wayne Phone 375-2933

CSIC NOTES

Mark Harris of Fort Hays State and Kelly Jennings of Washburn have been named players of the week in the CSIC.

Harris, a 6-2 junior from Flint, Michigan, scored 88 points in three contests. He made 34-52 field goals and was 17-19 from the free-throw line. Harris also totaled 14 assists, four steals, seven rebounds and one blocked shot. He popped for 35 points in the win over Bethany College. It was the second consecutive week that Harris has been named player of the week. Others nominated were Derrick Howse of Emporia State; Marvin Townsend of Missouri Southern; Calvin Spreng of Washburn; Darren Soucie of Kearney State; and Russ Rosenquist of Wayne State.

Jennings, a 6-4 junior from Topeka, Kansas scored 57 points in three games. She made 25-38 field goals and was 7-13 from the free-throw line. Jennings was also credited with 15 rebounds, six blocked shots, three steals and one assist during the week. It was the second week in a row that Jennings was selected. Others nominated were Carolyn Richard of Emporia State; Gretchen Scherhoff of Pittsburg State; Anita Rank of Missouri Southern; Anne Wendland of Missouri Western; Brenda VanLengen of Kearney State; Staci Derstein of Fort Hays State; and Kris Smith of Wayne State.

Men's Division

Washburn	8-1, 22-4
Kearney State	8-1, 20-5
Fort Hays State	6-3, 16-6
Missouri Southern	4-5, 13-11
Wayne State	4-6, 12-14
Emporia State	3-6, 14-9
Missouri Western	3-7, 9-14
Pittsburg State	1-8, 7-16

Women's Division

Washburn	8-1, 20-4
Missouri Western	6-4, 17-8
Emporia State	5-4, 7-15
Missouri Southern	4-5, 13-6
Kearney State	4-5, 13-7
Fort Hays State	4-5, 11-15
Pittsburg State	3-5, 12-12
Wayne State	3-7, 9-14

Wildcat Team Statistics

Wayne State is second in team defense allowing 72 points per game...sixth in field-goal percentage hitting 46.4 percent...seventh in free-throw percentage hitting 67.3 percent...eighth in team offense averaging 70.7 points per game.

Wildcat Individual Statistics

Vincent White is third in assists averaging 4.9 a game and seventh in free-throw percentage at 75 percent...Byron Haas is 10th in rebounding averaging 6.7 a game and 16th in scoring averaging 12.3 points a game...Scott Hurley is 10th in scoring averaging 16.3 points a game...Russ Rosenquist is 21th in scoring averaging 11.8 points a game.

Lady Wildcat Team Statistics

Wayne State is second in team offense averaging 75.2 points a game...fourth in team free-throw percentage hitting 65.5 percent...seventh in field-goal percentage hitting 41.6 percent...eighth in team defense allowing 78.3 points per game.

Lady Wildcat Individual Statistics

Dawnn Bert is first in rebounding averaging 10.3 boards a game, fifth in field-goal percentage hitting 51 percent and sixth in scoring averaging 17.7 points a game...Linda Schnitzler is fifth in free-throw percentage making 78.7 percent, fifth in scoring averaging 18.1 points a game, fifth in assists averaging 3.5 a game and 11th in field-goal percentage hitting 45.8 percent...Michelle Blomberg is third in assists averaging 4.3 a game and 16th in scoring averaging 11.5 points a game...Kris Smith is fourth in rebounding averaging 8.9 rebounds a game.

Lady Cats jeopardize playoffs with CSM loss

The Wayne State Lady Wildcats were outscored 34-26 in the second half as the College of Saint Mary downed the locals 69-46 in NAC play Wednesday night in Omaha.

six games and two of the three games remaining against NAC opponents Saint Mary, Chadron State and Kearney State. The loss Wednesday night means Wayne State must win three of the remaining five games.

Wayne State allowed the Flames to come from behind after posting a 40-35 lead at halftime. Losing a halftime lead has happened all too often to the Lady Cats. Seven of their 14 losses have come after leading at halftime. The Lady Cats lost to the College of Saint Mary earlier in the season at Rice Auditorium when they led the Flames 37-35 at halftime.

The Flames hosted Wayne State without its leading scorer Diane Foli. In the last meeting between the two teams Foli burned the Lady Cats for 38 points.

Before the College of Saint Mary game Coach Lenny Klaver said his team needed to win three of the last

Teammate Brenda Larsen picked up the slack for the hosts as she tallied 20 points. Pam Courtney and Renee Reisen also finished in double figures with 11 points each.

SAVE MORE AT SAV-MOR AND KEEP THOSE PRECIOUS MOMENTS FOREVER

COUPON
COLOR PRINT FILM DEVELOPING (C-41 process only)

12 Exposure Diac	\$1.99
15 Exposure Diac	2.69
24 Exposure Roll	3.99
36 Exposure Roll	5.59

Other good on single set of standard size prints. Limit one roll with this coupon (not valid with any other coupon). Limited time offer. Ask for details. Coupon redeemable at this store only. Expires February 19, 1987. #1997

Kodak PAPER
For a Good Look

Sav-Mor Pharmacy
1022 Main St. — Wayne 375-1444

PREVENTIVE HEALTH CARE FOR THE LIFE OF YOUR DOG

Along with regular exercise and checkups, eating the right foods is an important part of a preventive health care program. That's why there are different Science Diet® pet foods for your dog's different stages of life.

- CANINE GROWTH:** For puppies from weaning to maturity.
- CANINE MAINTENANCE:** For adult dogs from maturity to old age.
- CANINE PERFORMANCE:** For active adult dogs needing increased energy for physical performance and special conditioning.
- CANINE SENIOR:** For older dogs in which the aging process is evident.

Available in both dry and canned forms. Come by and let us show you why Science Diet is the best food you can feed your dog.

WAYNE VETERINARY CLINIC
East Hwy. 35 — Wayne Phone 375-2933



Photography: Chuck Hackenmiller

City tourney results

THE WOMEN'S CITY Bowling Tournament recently took place at Melodee Lanes in Wayne. Above, from left, are Addie Jorgensen and Sheryl Doring (doubles champs with a 1216 score); Marge Kahler (all-events champ with a 1,614 score); and Nancy Reed (singles champ with a 616 score).



Photography: Chuck Hackenmiller

Team winners

SHEAR DESIGNS bowling team captured first place in the women's city tournament with a 2,765 score. From left is Jeanette Swanson, Sue Denton, Joni Holdorf, Deb Erdmann and Bev Holdorf.

Wayne St. dumped by Lions

There's nothing like home cooking as the Wayne State Wildcats found out the hard way at Missouri Southern Friday night.

The Lions were outscored from the field but shot 20 more free throws as they downed Wayne State 89-72 in Joplin. The Cats hit 3-9 free throws while the hosts connected on 24-29 gift shots.

Southern built a lead that reached 12 points at 26-14 with 5:56 left in the first half. The Cats outscored Missouri Southern 15-9 from there on and trailed 35-29 at halftime.

Wayne State lost its momentum in the second half as the Lions reeled off the first nine points of the second half to take a 44-29 lead.

The Cats were not finished. They had an eight-point run that cut the lead to seven points. The visitors whittled the lead to 72-68 with 4:42 left in the contest.

But that's where the comeback stalled. In the last four minutes of the game Southern was 9-10 from the free-throw line and outscored the Cats 17-4.

Two Lion scorers hurt Wayne State. Marvin Townsend and Chris Tuggle combined for 60 points as Townsend scored a game-high 36 points.

The Cats were led in scoring by Scott Hurley. The junior popped for 22 points. He was 4-8 from three-point range. Russ Rosenquist also had a fine offensive performance as he hit for 17 points. Kevin Williams was the third Cat in double figures in scoring and rebounding. He tallied 10 points on five field goals and pulled down 10 boards.

The loss dropped Wayne State to 12-15 overall and 4-7 in the CSIC. Missouri Southern improved to 14-11 overall and 5-5 in the conference. The Lions avenged an earlier loss to the

Cats. Wayne State downed Southern 70-69 on Jan. 17 at Rice Auditorium. In that game Russ Rosenquist hit two free throws with three seconds left to give the Cats the win.

wayne bowling

Monday Night Ladies
Angie Nicholson, 207-182-524; Josie Bruns, 183-188-548; Judy Sorensen, 189-194-522; Dee Schulz, 195-526; Jo Ostrander, 181; Ad Kienast, 197; Ione Roeder, 495; Sue Denkhou, 187; Marge Kahler, 214; Jeanette Swanson, 182; Bev Holdorf, 180; Deb Hank, 493; Holly Stoltenberg, 490; Arlene Bennett, 182; Kathy Hochstein, 484; Teri Bowers, 192; Bev Sturm, 180; Geri Marks, 485.

Go Go Ladies
Deb Hank, 189-500; Jennifer Cole, 216-527; Marge Kahler, 195-548; Sharon Junck, 195; Fran Nichols, 490; Barbara Junck, 182. Split conversion: Joni Jaeger, 3-10.

Hits N Misses
Marge Kahler, 184-201-547; Theresa Stevens, 191-492; Sue Wood, 201-527; Jo McElvogue, 183-225; Cheryl Henschko, 189-482; Pam Nissen, 183-524; Donnie Riedel, 188-499; Geri Marks, 188-525; Marilyn Geher, 189-513; Judy Peters, 187-501; Wilma Fork, 183-508; Peg Probsen, 214-535; Sharon Junck, 189-515; Wanda Hefeld, 182-484; Laura Blstein, 492; Lorraine Johnson, 193; Barb DeWald, 191; Alla Meyer, 487; Essie Kattoli, 181; Dawn Spratly, 181; Judy Sorensen, 487; Linda Gamble, 201; Valerie Nelson, 485.

at Melodee Lanes. The Clarence May team defeated the Winton Wallin team 4,844 to 4,654.

High series and games were bowled by: Warren Austin, 179-515; Perry Johnson, 168-498; Milton Matthew, 179-496; Melvin Magnuson, 169-491; Floyd Burt, 187-480; Dale Gutschall, 174-453; Harold Macelljewski, 167-452; Carl Mellick, 157-440; and Winton Wallin, 150-434.

Wednesday Nite Owls
Don Jackolson, 211-224-627; Brad Jones, 219-201-565; Skip Deck, 218-203-808; Ted Ellis, 217-225-609; Barry Dahkoeller, 226-216-206; Chris Lueters, 219-584; Shannon Pospisil, 203-656; Don Oakeron, 210; Kip Bressler, 207; Kevin Peters, 224; Mic Daehniko, 201; Don Leighton, 211; Keith Gamble, 231; Arlyn Hurkett, 205.

On Thursday, Feb. 12 19 senior citizens bowled. The Dale Gutschall team defeated the Roy Sommerfeld team 4,520 to 4,454.

High series and games were bowled by: Don Sund, 231-562; Milton Matthew, 182-511; Melvin Magnuson, 200-511; Winton Wallin, 187-508; Perry Johnson, 188-501; Norman Anderson, 178-483; Swede Halley, 162-450; Gordon. Nurenberger, 156-435; and Myron Olson, 154-427.

Senior Citizens
On Tuesday, Feb. 10 21 senior citizens bowled in league action

Wayne native excels

Wayne native Don Meyer has his David Lipscomb Bisons playing well again this year. The Bison from Nashville, Tennessee are 22-4 and currently rated 13th in the country in the latest NAIA top 20. The Bison went 2-0 during the week but slipped from 11th to 13th in the rankings.

The Bison are the top free-throw shooting team in the NAIA. The team is hitting 78.6 percent of its gift shots.

David Lipscomb won the national championship last year when they defeated Arkansas-Monticello in the NAIA championship game in Kansas City.

Wakefield freshmen pay back Laurel

The Wakefield freshmen boys revenged an earlier loss to Laurel by downing the Bears 58-34.

The Trojans were led by Andy McQuistan and Tony Krusemark. The pair scored 16 and 15 respectively. Matt Jonas and Troy Twohig paced Laurel with 14 and 10 points each.

BOWLING AT MELODEE LANES



Make Us Your Headquarters For Prescriptions & Photo Supplies

GRIESS REXALL

THE WAYNE HERALD
For All Your Printing Needs

STATE NATIONAL BANK & TRUST CO.
116 West 1st
Phone 375-1130

Monday Night Ladies	WON LOST	Community League	WON LOST
Midland Equipment	19 9	Blue Light	24 8
Wayne Vet's Club	18 10	Temple	22 9
Shear Designs	18 10	Hollywood Video	22 10
Jacques	17 11	T & C Electronics	18 14
Wayne Campus Shop	14 14	Toni's Body Shop	17 14
Swans	14 14	Lumber Company	17 14
Carharts	12 16	Bill's Dry Cleaning	17 15
Greenview Farms	12 16	L & B Farms	11 21
Country Nurse's	11 17	Golden Sun Feeds	9 22
Hank's Custom Works	11 17	Ghost Team	1 31
Wayne Herald	10 18		
Ray's Locker	10 18		
High scores: Marge Kahler, 257-611; Greenview Farms, 689; Hank's Custom Work, 2583.		High scores: Lee Weender, 245-610; T & C Electronics, 938; Blue Light, 2599.	

Hits N Misses	WON LOST	Thursday Night Couples	WON LOST
Stevens Hatcher	22 6	Helffield-Kinstow	18 4
Bill's GW	20 9	Hammer-Nelson	13 11
Popo's II	18 10	Carman-Ostrander	12 12
Melodee Lanes	17 11	Spahr-Rahn	12 12
Past Extra Light	16 12	Chang-Sever	12 12
Wilson Seed	15 12	John-Maier	11 13
Don Goeden Constr.	12 15	Lutz Hansen	10 14
Pat's Beauty Salon	11 17	Brown Austin	8 16
T.W.J. Feeds	11 17	High scores: Ron Brown, 211; Conroy Spahr, 193; John Maier, 654-1890.	
Carroll Lounge	10 19	Thursday Night Couples	
The Diamond Center	9 19	Sally Hammer, 191-182-180-553.	
Barb's Styling Salon	8 24		
High scores: Jo McElvogue 226-624; Pat's Beauty Salon, 918; Stevens Hatcher, 2741.			

Wednesday Nite Owls	WON LOST	City League	WON LOST
C&D Men	20 4	Wood P & H	20 8
Lee and Rosie's	18 6	L & B Farms	17 11
Electrolux Sales	15 9	Past Blue Ribbon	16 12
Deck Haymovers	14 10	Wayne Greenhouse	16 12
Fourth Jug II	14 10	Melodee Lanes	15 13
Melodee Lanes	13 10	Vet's Club	14 13
Comm'l State Bank	12 12	Mrsny's Son. Serv.	14 14
Logan Valley Imp.	11 12	Black Knight	12 16
Fourth Jug	9 15	Clarkson Service	12 16
Jacques Seeds	8 16	Tripp Travel	12 16
Ray's Locker	8 16	American Family Ins.	11 17
Dakula	3 21	K.P. Comtr.	8 19
High Game: Shannon Pospisil, 234; Barry Dahkoeller, 648; C&D G Men, 1069-2958.		High scores: Bob Twite, 247; Val Kienast, 653; Wood P & H, 1056-2884.	

Go Go Ladies	WON LOST	City League	WON LOST	
Pin Pals	23 12	Jerry Baler, 209-212-581; Barry Dahkoeller, 203-225-415; Harold Murray, 237-217-643; Lee Weender, 231-204-604; Chris Lueters, 204-205-580; Sid Preston, 221-205-601; Val Kienast, 227-226-900; Bob Telle, 203-639; Loren Hammer, 212; Scott Brummond, 212; Marv Nelson, 210; Mark Meyer, 217; Doug Ross, 209; Ken Spittgenber, 200.		
Pin Splinters	20 12			
Bowling Buddies	20 12			
Hits & Misses	19 12			
Lucky Strikers	18 12			
Rolling Pins	18 14			
Pin Hitters	13 19			
Roadrunners	12 20			
Alley Cats	10 22			
Bowling Belles	6 26			
High scores: Sharon Junck, 229-583; Hit & Misses, 808-2214.				

Oh Thank Heaven

7 ELEVEN
619 Main — Wayne

20-Oz. Coffee **59¢**

Carton Cigarettes **\$10.42**

Extra Large-22-Oz. Slurpee **49¢**

12-Oz. 6-Pack Cans Pepsi **\$1.79**

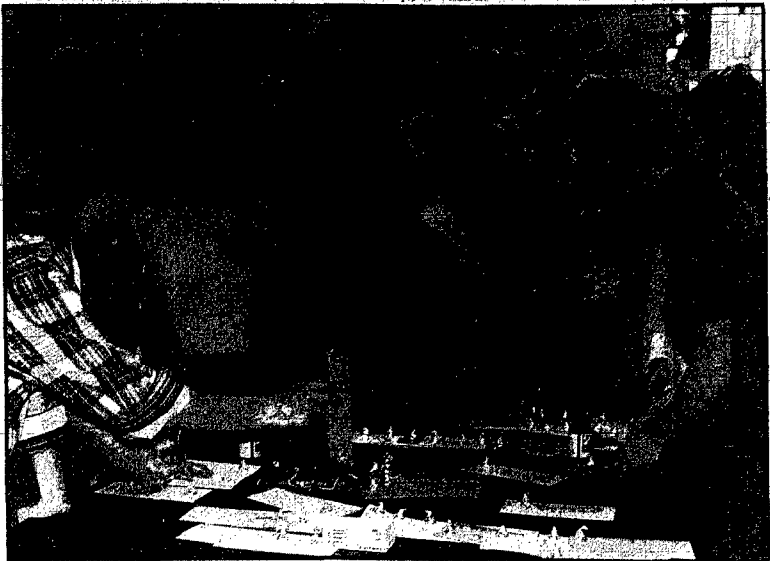
FREE • FREE • FREE
WITH COMPLETED PUNCHCARD — YOUR CHOICE OF
PIERRE CARDIN DELUXE GIFTS
VISIT YOUR 7-ELEVEN FOR DETAILS • THIS OFFER GOOD THROUGH JULY 31, 1987
Prices Good At Participating Stores Through February 28, 1987

WAYNE DISTRIBUTING
IMPORTED
Heineken
HOLLAND BEER

Schmidt
East Hwy. 35

Pabst Blue Ribbon
Phone 375-3085

winside schools



Photography: Diane Jaeger

MEMBERS OF THE WINSIDE Student Council were busy earlier last week putting candy kisses on Val-O-Grams to be delivered to students on Feb. 13. Assisting with the project were Tracy Topp, Connie Smith, Mari Newvonen, Max Kant, Michelle Thies, Mace Kant, Darren Wacker, Janne Riis, Doree Brogren, Cindy Berg, Shannon Bargstadt, Kathy Leighton, Wendy Boldt and Mary Brueger. Each year, Student Council members sell the Val-O-Grams for 10 cents each to students and teachers to write personal messages on and give to other students.

HOLIDAY CLOSINGS

There will be no window service or rural route deliveries at the Laurel Post Office today (Monday) in observance of President's Day.

There will however be delivery for locked box patrons. While there will be no window service, mail going out of town will be picked up Monday afternoon and patrons wishing to send mail out of town are asked to put it in the outside drop box for afternoon pickup.

The Security National Bank in Laurel and the First National Bank of Belden will also be closed in observance of President's Day.

FARMERETTES

The Farmerettes Extension Club from Laurel met in the home of Mrs. Lillian Halsch on Tuesday with 17 members in attendance. Mrs. Lola Belle Ebmeier, president, opened the meeting by having the Collect read in unison. The lesson on "File It Easy, Find It Fast" was given by Mrs. Carrie Dahl and Mrs. Roberta Lute.

The next meeting will be in the home of Mrs. Maxine Halsch on Tuesday, March 10. The lesson, "New Waves in Cooking" will be given.

PARENT-TEACHER CONFERENCES

There will be no classes at the Laurel-Concord School on Friday, Feb. 20, kindergarten through 12th grade. Parent-teacher conferences are planned from 8 a.m. to 4 p.m. that day. These conferences are held at the midpoint of the third quarter to enable teachers and parents to positively work together and communicate in order to adjust a student's educational program to insure their continued progress and academic success. Parents have been notified as to their time schedule for conferences.

laurel-concord schools

TAMI SCHMITT TO ATTEND NATIONALS

Tami Schmitt, 18, daughter of Gary and Janice Schmitt of Laurel will be presenting her research paper entitled "The Effects of Low Level Exposure to Aluminum in Gambusia affinis with Emphasis on Reproductive Behavior: Preliminary Study at the National American Junior Academy of Science Symposium in Chicago, Ill., Feb. 13-17. Besides the Youth Symposium, she will also be involved in a poster presentation for the American Association for the Advancement of Science, visit the Museum of Science and Industry, as well as numerous other AJAS and AAAS functions.



Tami Schmitt

Tami's presentation will be the culmination of three years of research at Laurel-Concord High School in independent science research. The class is designed to give outstanding students the opportunity to explore areas of their interest, and Ed Brogie, the ISR instructor, will also be attending the national symposium.

Tami was the winner of the Junior Academy of Science Spring Exposition at Wayne State College, and the

Nebraska State Junior Senior Academy of Science last April, and will be the Nebraska representative at the national symposium in Chicago.

carroll news

mrs. edward fork 585-4827

METHODIST WOMEN

The United Methodist Women met Wednesday at the church fellowship hall. Mrs. Gene Rethwisch opened the meeting with a reading, Mrs. Ed Simpson reported on the last meeting and Mrs. Lowell Rohlf read the treasurer's report.

Pastor Mrs. James Mills of Show Low, Ariz. had the lesson with a Bible presentation taken from Revelations. Mrs. Esther Hansen served.

The next meeting will be March 11 when Mrs. Howard McLain will have the lesson, "Hear Us When We Pray" and Mrs. Wayne Hankins will serve. Roll call will be a short prayer.

The second in a series of noon dinners will be served for the public on Sunday, Feb. 22.

LADIES AID AND LWML

St. Paul's Lutheran Ladies Aid and LWML met Wednesday at the church fellowship hall.

Mrs. Arthur Cook was acting president and reported on the last meeting. Mrs. Ernest Junck read the treasurer's report.

Mrs. Edward Fork was in charge of devotions and the group read from Psalms and also a prayer. Mrs. Arthur Cook accompanied for group singing, "Praise to the Lord the Almighty, the King of Creation."

Mrs. Dennis Junck, reading leader, reviewed several articles taken from the winter LWML Leaguer.

Mrs. Edward Fork, Christian growth leader, read "Have You Taken It to Jesus?" Mrs. Fork will be in charge of visitation for the month of February.

Pastor Miller had Bible study from the book of Mark.

Mrs. Edward Fork served.

Mrs. Gerry Hurlbert will be the March 11 hostess.

SENIOR CITIZENS

Sixteen were present last Monday when the Senior Citizens met at the fire hall for an afternoon of cards. Prizes went to George Johnson, Mrs. Paula Pausitan and Mr. and Mrs. Arthur Cook.

Mr. and Mrs. Adolph Rohlf served.

The group signed a get well card for Don Frink.

Mr. and Mrs. Arthur Cook will host the meeting today (Monday) at the fire hall.

Mrs. Mable Billheimer was honored for her birthday when Mrs. Bessie Nettleton hosted a coffee for her last Monday. Guests were Mrs. Billheimer of Carroll, Lynette, Fahrenholz and Sharon Grashorn, both of Wayne.

Mr. and Mrs. Harold Loberg and Koby and Mr. and Mrs. Ray Junck went to Alamosa, Colo. Feb. 5 where they visited in the Joe Montoya home.

En route home the group toured the Royal Gorge. They returned home Feb. 8.

Mrs. Ralph Sherer of Wayne stayed with her grandchildren, Danny and Casey Junck while their parents were gone.

Jeff Davis was honored for his 19th birthday when dinner guests in the Mrs. Don Davis home Feb. 1 included Mr. and Mrs. William Williams and Brandon of Omaha; Mr. and Mrs. Gordon Davis and Keili; Earl Davis; Mr. and Mrs. Terry Davis and Wendy; Mr. and Mrs. Rick Davis and Justin; Mr. and Mrs. Kenneth Hall, Mandi, Brandon and Ashley; Mr. and Mrs. Kevin Davis and Joshua; Mr. and Mrs. John Paulsen, Conni Burback and Nicole Fredrickson.

Kim Fork and her grandparents, Mr. and Mrs. Edward Fork had supper out Feb. 7 to honor Kim's 15th birthday.

CREATIVE CRAFTS

The Creative Crafts Class from Laurel will be meeting tomorrow (Tuesday) at 7:30 p.m. in the home of Mrs. Mildred O'Gara. The co-hostess will be Mrs. Dolores Anderson.

VETERANS CLUB

The Laurel Veterans Club will be meeting at the VFW Hall in Laurel today (Monday) at 8 p.m. All veterans are encouraged to attend.

HILLCREST CARE CENTER CALENDAR

Monday, Feb. 16: Chit N Chat, 10 a.m.; bingo, 2 p.m.; Magic Me Kid, 3 p.m.

Tuesday, Feb. 17: Harry Wallace on the organ, 10:30 a.m.; Tonette Neilsen's birthday.

Wednesday, Feb. 18: Sing-a-long, 9:30 a.m.; Stir and Bake, 2 p.m.

Thursday, Feb. 19: Volunteers will do hair, 9 a.m.; Crafts, 2 p.m.; Joy Choir from United Methodist Church, 7 p.m.

Friday, Feb. 20: Bible study, 2 p.m.

Saturday, Feb. 21: Cards, 2 p.m.

Sunday, Feb. 22: Full Gospel Fellowship, 2 p.m.; Lela Tuttle's 97th birthday.

SENIOR CITIZENS CENTER CALENDAR

Monday, Feb. 16: Center open from 10 to 12 and 1 to 5 p.m.; pitch and canasta, 2 p.m.

Tuesday, Feb. 17: Center open from 10 to 12 and 1 to 5 p.m.

Wednesday, Feb. 18: Center open from 10 to 12 and 1 to 5 p.m.

Thursday, Feb. 19: Center open from 10 to 12; men's afternoon for cards, pool, coffee, etc., 1 to 5 p.m.

Friday, Feb. 20: Center open from 10 to 12 and 1 to 5 p.m.; pinochle and canasta, 2 p.m.

LAUREL-CONCORD SCHOOL CALENDAR

Monday, Feb. 16: Early childhood education committee, 7:30 p.m., elementary library.

Wednesday, Feb. 18: Junior high tourney at Harrington, girls at 1:30 p.m., boys at 2:45 p.m.; C-1-10 sub-district basketball, girls at Norfolk.

Thursday, Feb. 19: Sixth grade Hamilton's class hosts their parents for lunch; finals C-1-10 sub-district at Norfolk.

Friday, Feb. 20: Boys basketball at Randolph, 6:30 p.m.; no school for students; parent-teacher conferences, 8 a.m.-4 p.m.

Saturday, Feb. 21: Junior high tourney finals at Harrington; freshman boys-girls tourney at Randolph.

hoskins news

mrs. hilda thomas 565-4569

A-TEEN CLUB

The A-Teen Home Extension Club met with Mrs. Leslie Kruger on Wednesday afternoon.

The meeting opened with group singing of the extension song, "Onward ever Onward" and Mrs. Guy Anderson, president, conducted the business meeting.

Roll call was "how I met my husband."

Mrs. Leslie Kruger reported on the previous meeting and gave the treasurer's report.

Mrs. Vernon Hokamp, music leader, led in singing, "Let Me Call You Sweetheart," commemorating St. Valentine's Day.

Mrs. Hokamp was honored with the birthday song and anniversary song. The president reported on the recent council meeting.

The hostess drawing was won by Mrs. Diane Kruger.

The lesson on "Good Nutrition, Stir Fry" was given by Mrs. Vernon Hokamp.

wakefield news

mrs. walter hole 287-2722

NEWS FROM THE SENIOR CENTER

The Rev. Steven Kramer was a guest at the Wakefield Senior Citizens Center on Feb. 6 and spoke on Valentine Traditions and the meaning of love.

A public hearing was held Feb. 9 and seniors attending filled out a survey on ways of improving programs at the senior center. There also was discussion.

SENIOR CENTER CALENDAR

Monday, Feb. 16: Exercise, 9 a.m.; blood pressure clinic, 11 a.m.; men travel to South Sioux City to play pool.

Tuesday, Feb. 17: Sing-a-long led by Gloria Oberg, 12:45 p.m.

Wednesday, Feb. 18: Exercise, 9 a.m.; Dale Kindred is guest speaker, 12:45 p.m.

Thursday, Feb. 19: The Rev. Floyd Brown of Sioux City will speak on black history, 12:45 p.m.

Friday, Feb. 20: Exercise, 9 a.m.; the Rev. Bruce Schut will speak, 12:45 p.m.

Monday, Feb. 23: Exercise, 9 a.m.

MEAL MENU

Monday, Feb. 16: Barbecued meatballs, creamed potatoes, vegetable

casserole, coleslaw, bread and butter, apricots.

Tuesday, Feb. 17: Creamed chicken on biscuits, beets, fly-cup salad, apple juice, dessert.

Wednesday, Feb. 18: Pork cutlets, baked potatoes, stewed tomatoes, citrus salad, bread and butter, pudding.

Thursday, Feb. 19: Liver and onions or fish, potato casserole, sunshine salad, wax beans, bread and butter, pears.

Friday, Feb. 20: Swiss steak, mashed potatoes, creamed cabbage, gelatin, bread and butter, bar.

QUILTING PARTY

Mrs. Laura Ulrich hosted a quilting party Wednesday afternoon.

Those attending were Mrs. Everett Wetzler, Mrs. Art Leu and Mrs. Frances Ulrich, all of Norfolk, and Mrs. Mary Jochens, Mrs. Rose Puls and Mrs. Edwin Brogie.

The ladies tied several quilts which will be donated to the Good Neighbors and the Veterans Home at Norfolk.

Mr. and Mrs. Ted Rencro of Wetumka, Okla. came Feb. 7 and were overnight guests in the Mr. and Mrs. Willard Maas home.

Mrs. Gene Ulrich of Sioux City spent Feb. 6 and 7 with Mrs. Laura Ulrich.

Nineteen friends and neighbors gathered at the Stanley Langenberg farm Wednesday morning to clean out yards and haul fertilizer to the fields.

Langenberg had the misfortune of losing three fingers in an auger accident at the farm on Jan. 26.

He spent two days in the hospital and is recuperating at home.

Neighbor ladies assisted in preparing and serving dinner for the men.

Buy an Apple IIgs system before March 15th and see the savings stack up.

Now you have a stack of good reasons to buy an Apple IIgs™. Starting with stacks of cash—cash rebates of up to \$250 on virtually any of the Apple®-branded peripherals and accessories you select.

Simply purchase your Apple IIgs system™ before March 15, 1987 from an authorized Apple dealer, and you'll save hundreds of dollars on printers, modems, disk drives and more. You'll even save on Apple-branded software programs. And with 10,000 other programs from the world's largest educational software library, you and your family will never outgrow your Apple IIgs.

Which means, right now, there are more good reasons to buy an Apple IIgs than ever before. Hurry in to see us today.

Apple CONNECTION
COMPUTERS AND OFFICE PRODUCTS

1113 Main St.,
Wayne, Neb.
(402) 273-2107

The power to be your best.™

Authorized Dealer

Agricultural Real Estate Loans

If you are locked into a high interest rate loan or are considering purchasing more land; check out our competitive loans.

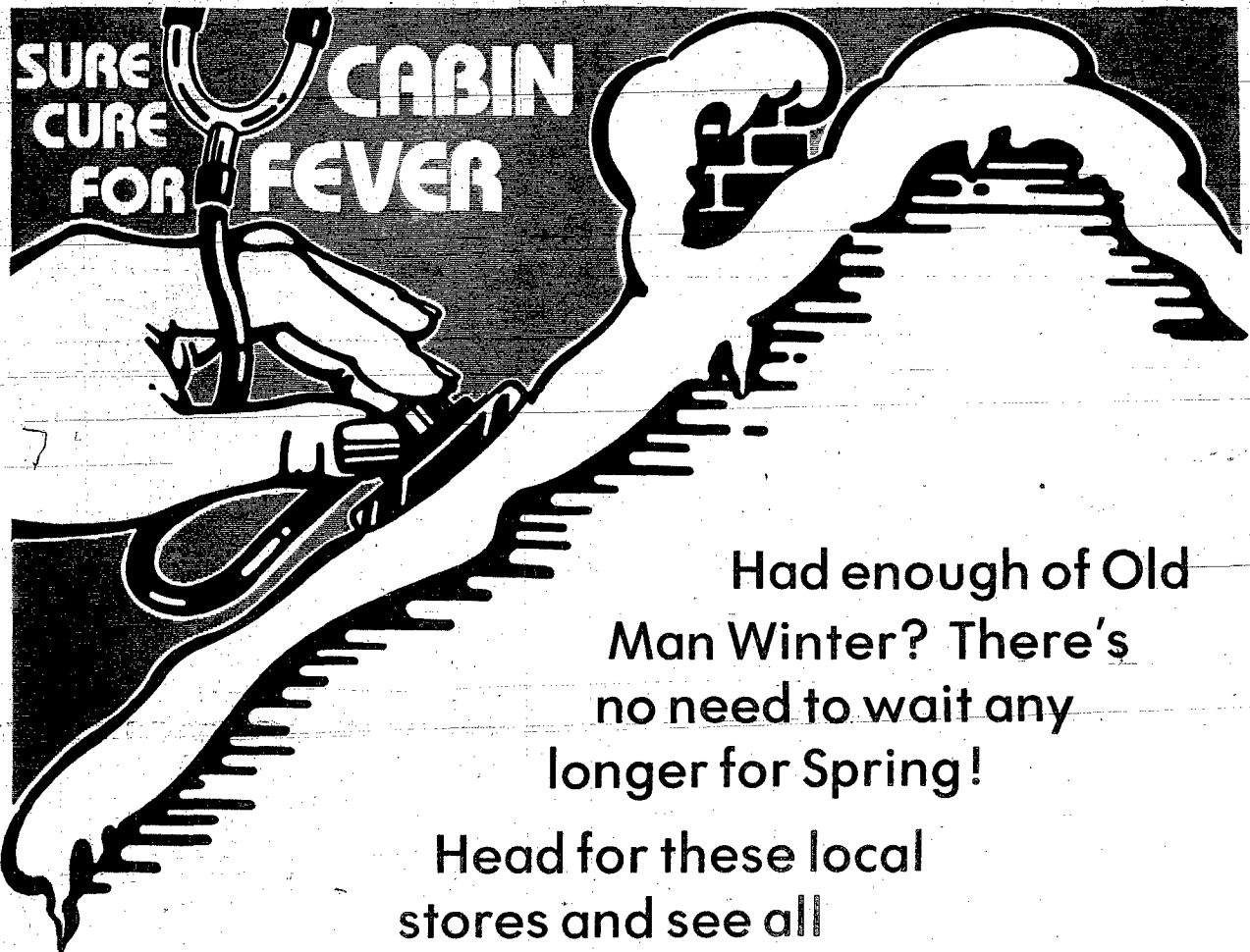
- Interest Rates from 9.0% ~~9.5%~~ to 10.25%
- Variable and Fixed Rate Loans
- No Origination Fees

Call or stop in and see how much money you can save

PENDER STATE BANK

222 Main Street
Pender, Nebr. 68047
Phone 402-383-3063

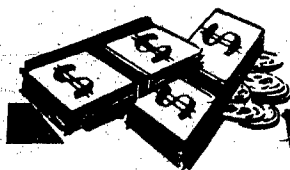
SHOP LOCALLY!



Had enough of Old
Man Winter? There's
no need to wait any
longer for Spring!

Head for these local
stores and see all
that's new for the new
season and beyond.

It's all here now...



It Pays to Trade Where You Live

Black Knight
Carr Auto & Ag Supply
Century 21 State-National
Charlies Refrig. & Appl. Service
Diamond Center
Discount Furniture
Doescher Appliance
El Toro Package Store & Liquor
Ellingson Motors
First National Agency
First National Bank
Fredrickson Oil Co.

Godfather's Pizza
Griess Rexall
Jensen-Peters Agency, Inc.
Koplin Auto Supply
Melodee Lanes
Merchant Oil Co.
Morris Machine Shop
Northeast Nebr. Insurance Agy.
Pamida Discount Center
Pat's Beauty Salon
McBride-Wiltse Mortuary
WAYNE - WINSIDE - LAUREL

Sav-Mor Pharmacy
ACROSS FROM WSC COLLEGE
Schumacher Funeral Home
WAYNE - CARROLL - WINSIDE
State National Bank
Surbers
CLOTHING FOR MEN & WOMEN
Wall to Wall Decorating
Wayne Auto Parts
Wayne Care Centre
Wayne Co. Public Power Dist.
Wayne Greenhouse
Wayne Herald
Wayne IGA

Come To Our "Goofy" Half Price Sale

DARLENE GOOFY

DIAMONDS
WATCHES
STONE RINGS
14 kt. GOLD CHAINS
PENDANTS

EARRINGS
BLACK HILLS GOLD
STONEWARE
STAINLESS STEEL

HAVE WE GOT DOG GONE GOOD DEALS FOR YOU AT THE AUDITORIUM

Mines Jewelers 204 Main Wayne, Nebraska 373-2580
Since Jewellery since 1940

SHOP 20-30% SAVINGS IN OUR STORE ON OTHER MERCHANDISE

SUPER BUYS FOR SWANS' DOG DAYS
You Won't Be Disappointed!

While in town, check our store for displays of all new spring merchandise!
(store open regular hours)

Swans' apparel for Women
205 Main

LOOK AT THE DOG DAYS

SPECIALS!
PAINT (Interior & Exterior)
CABINET HARDWARE
BUILDERS HARDWARE
POWER TOOLS
HAND TOOLS
DOORS & MILL WORK

PANELING
FLOOR COVERING
REMNANTS
GARDEN SUPPLIES & TOOLS

TAKE CONSTRUCTION CO.
110 So. Logan Street • Wayne, Nebr. 68787 • 373-3374

DOG DAYS IN WINTER
Save 40% to 75%

Men's: Shirts, Slacks, Sweaters, Jackets, Suits
Women's: Blouses, Slacks, Jeans, Dresses, Sweaters, Co-ordinates

RUSTY NAIL
218 MAIN 14021 373-3795
WAYNE, NE 68787

DOG DAYS IN WINTER!
THURSDAY & FRIDAY
FEBRUARY 19 & 20
10 A.M. to 8:30 P.M. THURSDAY
8:30 A.M. to 5:00 P.M. FRIDAY
WAYNE CITY AUDITORIUM

UP TO 75% OFF
SELECTED SPORTING GOODS & SPORTSWEAR

Name Brands Include Russell, Wilson, Dodger, Brooks & Turntec.

Wayne Sporting Goods
East Hwy. 35, Wayne, Nebraska 68787

GREAT DEALS! REAL BARGAINS!

DOG DAYS DISCOUNTS

KID'S CLOTHES MATERNITY WINTER MERCHANDISE

Open Regular Business Hours At Store Location

kid's closet 215 Main Wayne, NE 373-4053

WINTER BUDGET SAVERS

HOME-MADE CINNAMON ROLLS AND COFFEE... TAVERN SANDWICHES... ICED TEA... AND OTHER BAKED GOODS SOLD DURING SALE HOURS

Dog-Gone Good Savings

- Large Wicker Baskets
- Assortment of Mugs
- Candles
- Inspiration Thoughts Plaques
- Odds & Ends of Good
- Color Silk Flowers
- Glassware
- Hanging Grape Ivy
- Foliage Plant
- Ficus Benjamin Plants
- 5-Inch Pots
- MANY OTHER ITEMS

Wayne Greenhouse INC.
215 E. 10th Phone 373-1555 Wayne

WALL TO WALL DECORATING 215 MAIN 373-2120

BIG SAVINGS! AREA RUGS
40% Reg. Price
REMNANTS AND ROLL ENDS OF CARPET

VINYL REMNANTS (Cheap, Cheap, Cheap)

Bargain Gallons of PAINT

Sanitas & Other Wallpaper 30% Off
Wallcoverings at store location only

Open Regular Business Hours At Store Local: n

Knit Collars & Bands 25¢ Each

Ribbing 5¢ An Inch

Sweatshirt Prints & Plains Sweater Knits \$2.00 Yd.

Calicos \$1.00 Yd.

Single Knits, Plain, Stripe & Kiddie Prints \$1.00 Yd.

JUST SEW
512 E. 7th Wayne 373-4697

AUDITORIUM SALE SAVE 50% TO 70%

PRICES CUT TO THE BONE

LADIES: Sweaters - Blouses - Dresses - Slacks - Skirts - Much More
MEN: Shirts - Slacks - Sweaters - Vests - Coats - Much More

SURBERS SURBER